

"IN" Newsletter

DECEMBER 2025

WWW.ILNAWGJ.COM

CALENDAR OF EVENTS

- Dec 1 - IL NAWGJ SGC Online Meeting
- Jan 1 - Oct 31 - Reimbursements can be submitted for Education Package during "testing year" 2026
- Jan 2 -4 - NAWGJ National Judges Cup

New!

CLICK HERE FOR THE
GOOGLE FORM TO SIGN-
UP FOR CONGRESS

*For those who worked 6 or more
sessions at Judges Cup 2025*

TOP NEWS

- CONGRATULATIONS TO ALL OUR JUDGES WHO RECEIVED A CHAMPIONSHIP MEET ASSIGNMENT. SEE PAGE 2.
- PAGE 4 CONTAINS LINKS TO THE UPDATED USAG R&P AS WELL AS NAWGJ POLICIES & PROCEDURES.
- PLEASE ANSWER ALL EMAILS QUICKLY AND TIMELY.
- LOOK ON PAGE 3 FOR THE ASSIGNING PROTOCOLS FOR IL -NAWGJ 2025-2026.
- NATIONAL UPDATES TO XCEL AND DEVELOPMENT PROGRAMS HAVE BEEN PUBLISHED. SEE PAGE 5.
- EDUCATIONAL STIPEND OPPORTUNITIES ON PAGE 6.
- **NEW!!** 2025-2026 MEMBERSHIP REIMBURSEMENT GOOGLE FORM : PRESS HERE FOR LINK

REMEMBER!

Judges Cup 2025 Compensation Package

One Session worked

- The first session worked will be volunteer time.
- Each judge is eligible to receive 4 hours towards CPE credits.
- Each judge earns Judges Cup 2025 apparel.
- Each judge will be reimbursed mileage (must show proof) and a hotel room will be provided, based on judges availability. (No Thursday or Sunday night stays)

Two or more Sessions worked

- After the first session of volunteer time worked, each judge will receive \$70 per session
- Each judge will get 2026-2027 NAWGJ Membership paid.
- Working set-up or tear-down (not both), will give you one session paid.

Six or more Sessions worked

- Each judge will be eligible to receive an educational opportunity (i.e. Congress, Flippin Education or Symposium Registration) which will be paid at the early bird group rate, if available.
- Each judge will receive an additional \$250 towards approved reimbursable expenses with receipts.

Congrats!

- AMANDA MEINER- LEVEL 10
- JACKIE ZERBS - LEVEL 9
- KARYN DOMZALSKI - LEVEL 10
- MARILYN ANDERSON - LEVEL 10

*These judges have passed
into the next rating level
for this 25/26 season.*

Congratulations!

The following judges have been awarded...

State Championships

Level 3 STATE

- Billy Gurin
- Christy Kearns
- Jean Johnson
- Mary Lou Ackman
- Renee Tubbs
- Sharon Sargeant
- Suzanne Schneider
- Sue McNamara -Brosnan
- Sue Woloszyk

Level 4/5/Bronze State

- Amanda Meiner
- Heather Forbes
- Mary Lou Ackman
- Savanna Mensching
- Shane Sanders
- Sharon Sargeant
- Sue Woloszyk
- Suzanne Schneider
- Tanya Chmielewski

G/P/D/Sa State

- Amanda Meiner
- BettyAxelson-McClelland
- Breanna Dumbacher
- Brooke Bennett
- Cheryl Schuh
- Cindy Morano
- Ellen McDermott
- Heather Forbes
- Kathleen Gebhardt
- Lillian Carrico
- MaryLou Ackman
- Renee Tubbs
- Savanna Mensching
- Shane Sanders
- Sharon Sargeant
- Sue Woloszyk
- Suzanne Schneider
- Tanya Chmielewski

Level 9/10 State

- Amy Delaney
- Christy Kearns
- Heather Forbes
- Jean Johnson
- Jessica Holtz
- Mary Lou Ackman
- Richard Sabel
- Sharon Sargeant
- Sue McNamara-Brosnan

Level 6/7/8 State

- Amy Delaney
- Billy Gurin
- Christina Kearns
- Cindy Morano
- Heather Forbes
- Jean Johnson
- Jessica Holtz
- Shane Sanders
- Sharon Sargeant

Silver State

- Amanda Meiner
- Breanna Dumbacher
- Christina Kearns
- Cheryl Schuh
- Cindy Morano
- Elizabeth Berg
- Kathleen Gebhardt
- Suzanne Schneider
- Tanya Chmielewski

Nationals

L10 Nationals

- Heather Forbes
- Mary Lou Ackman

L9 Easterns

- Sue McNamara-Brosnan

Regionals

L9/10

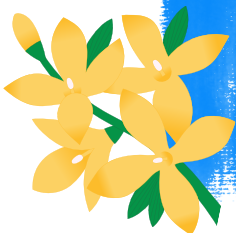
- Heather Forbes
- Jessica Holtz
- Mary Lou Ackman
- Sue McNamara- Brosnan

Level 6-7-8

- Amy Delaney
- Christi Kearns
- Jeanne Johnson
- Renee Tubbs
- Shane Sanders

Xcel

- Billy Gurin
- Cindy Morano
- Sharon Sargeant
- Suzanne Schneider



Assigning Protocols

2025-2026 IL-NAWGJ

Eligibility:

- Must be available in GymJas at time of assigning meeting. If a judge is requested and not available, assignor on record will contact judge to confirm availability.
- Must have the appropriate rating for the meet.
- Must be a member in good standing with NAWGJ and USAG (NGA, AAU if necessary). All memberships and certifications must be current AND updated in GymJas.
- If a contract is canceled by a judge, your eligibility is moved to the end of the list. (special exceptions-funerals, illness)

Procedures:

- Meets will be assigned each weekend based on the USA Gymnastics Illinois Phase and Priority system, with attention being paid to the meets of other organizations (i.e. AAU, Sokol, etc.).
- Assign judges based on meet director requests and judge preferences.
- After meet director requests and judge preferences have been exhausted, assigning will default to the existing assigning process until the remaining judge positions are filled.
- Other considerations for assigning such as proximity to the meet site and number of meets already assigned to each judge.
- Contracts not signed in a timely manner can be removed by the assigning committee.
- Out of State judges will only be assigned at the written request of the meet DIRECTOR in GymJas OR if no other Illinois judges in good standing and/or with the required rating are available at the time of assigning.
- If an out-of-state meet referee is requested, it is the responsibility of the meet director to ensure the out-of-state meet referee follows IL-procedures.Illinois Meet Referee responsibilities.
- A contract can only be canceled by the assigning committee under limited circumstances (i.e. a change of dates/level, a decrease in the number of judges requested due to registration). The meet director must inform the assigner on record in writing what changes are occurring and if applicable which contracts will be canceled.
- Please refer to R&P (p. 25 section G) regarding additional information about modifications and cancellations of contracts.

*Click on the appropriate icon
which provides a link to...*

USAG Rules and Policies (R&P)

NAWGJ Policies and Procedures



2025 - 2026



Women's Artistic

RULES AND POLICIES

Governing Competitors and Competitions
sanctioned by USA Gymnastics
and the

National Women's Program Committee



NATIONAL ASSOCIATION OF Women's Gymnastics Judges



Rules of Professional
Conduct - Updated
September 2025



Disciplinary Procedures
- Updated September
2025 - Complaint Form
link available on the
Official Documents page.



Media Policy - Updated
September 2025 -
Complaint Form link
available on the Official
Documents page.



Social Media Policy -
Updated 2025

Instead of CANONS, we now follow Rules of Professional Conduct.

READY TO JUDGE?

2025-2026 CHECKLIST

- Update all membership registrations and complete Safe Sport.
- Understand all recent rule changes as well as update the pages in your books. Links to Xcel and Dev updates on this page.
- GYMJAS
 - Update all expiration dates.
 - Update affiliations.
 - Complete your availability in your judging schedule.
 - Comments in GYMJAS should be general and not specific meet requests.
(e.g. Cannot stay in a hotel, Do not travel South, Judging Out of State on this date)
- See you the weekend of Nov 7-9 for Judges Cup 2025!
- Need a new uniform? You can see the great additions to uniform options by using the QR code.

Xcel & Dev LINKS TO UPDATES

- [Joint Xcel/Technical Committee minutes from May 13, 2025](#)
- [Xcel Committee minutes from May 13-14, 2025](#)
- [Joint Dev. Program/Technical Committee minutes from May 12, 2025](#)
- [Dev. Program Committee minutes from May 12-13, 2025](#)
- [Technical Committee minutes from May 12-14, 2025](#)

Uniforms



Men's and Women's
Official Uniform Page – QR codes



Land's End Business offers 4 New Choices...

- Softshell Vest
- Custom Logo Insulated Vest
- Thermocheck Vest
- Thermocheck 100 Custom Embroidered Fleece Quarter Zip Pullover Top

Did you know?



EDUCATIONAL STIPEND OPPORTUNITIES

As an IL-NAWGJ member, you have benefit stipend opportunities.

Please contact Christi Kearns if you have any questions. educationchristi@gmail.com

Recruitment Stipend

- **Eligibility:** Current Illinois NAWGJ members who recruit new judges.
- **Requirements:** The new judge must purchase all necessary memberships and complete required classes (SafeSport, safety certification, background check, etc.).
- **Amount:** \$50 stipend once the new judge is ready for assignment.

Retention Stipend

- **Eligibility:** Current Illinois NAWGJ members who are mentors.
- **Requirements:** Mentors must help their mentees test up to level 9 or level 10 and ensure they have all necessary credentials.
- **Amount:** \$50 one-time stipend upon successful completion of both parts of the level 9 or level 10 test by the mentee

Education Stipend

- **Eligibility:** Current Illinois NAWGJ members seeking further education.
- **Requirements:** Judges may practice judge up to two sessions per year/season for a \$50 stipend per session. (Max stipend \$100 per year/season). Must schedule with the meet referee at least 2 weeks in advance so the meet ref can obtain permission from the meet director. A signed verification form from the meet referee is required for reimbursement.
- **Limitations:** No travel expenses reimbursed, and no more than 4 educational judges may attend any one meet with meet director approval.
- **Advantages:** This will be particularly helpful to judges testing up who logistically can't be assigned to sessions that include their new level

ARE YOU A NEW MEET REF ?

I JUST FOUND OUT I'M A MEET REFEREE.
WHAT DO I DO?
HERE ARE GREAT LINKS TO HELP...

[IL MEET REFEREE CHECKLIST](#)

[IL MEET REFEREE JUDGES MEETING TEMPLATE](#)

ARE YOU A NEW JUDGE ?

Please contact me, Christi Kearns if you are a new judge. I can help assign you to a mentor!

educationchristi@gmail.com

Link to Updates

<https://nawgj.org/https-usagym-org/updates/>

NATIONAL LINKS

- [Category Description & Eligibility Criteria - USA Brevet & National](#)
- [Brevet Course Eligibility Form](#)
- [National Course Eligibility Form](#)
- [Documentation - USA Brevet & National](#)
- [Activity Involvement - USA Brevet & National](#)
- [Leadership Approval Form - USA Brevet & National Eligibility Course-Leadership Credit](#)

"IN"



IMPORTANT COMMITTEE LINKS

- [Joint Xcel/Technical Committee minutes from May 13, 2025](#)
- [Xcel Committee minutes from May 13-14, 2025](#)
- [Joint Dev. Program/Technical Committee minutes from May 12, 2025](#)
- [Dev. Program Committee minutes from May 12-13, 2025](#)
- [Technical Committee minutes from May 12-14, 2025](#)

IL NAWGJ Committee Contact Information

- Christi Kearns-Education Chairperson
 - educationchristi@gmail.com
- Heather Forbes - State Judging Director (SJD)
 - ilsjdheather@gmail.com
- Mary Lou Ackman - Financial Assistant
 - Financeackman@gmail.com
- Richard Sabel - Webmaster
 - ilwebmasterrichard@gmail.com
- Sarah Mark - Assignor
 - ilnawgjassignorsarah@gmail.com
- Sharon Sargeant - Judges Cup Chairperson
 - judgescupsharon@gmail.com
- Sue Brosnan-McNamara - Assignor
 - ilnawgjassignorsusan@gmail.com
- Tanya Chmielewski- Administrative Assistant
 - tanya.ilnawgjadmassist@gmail.com